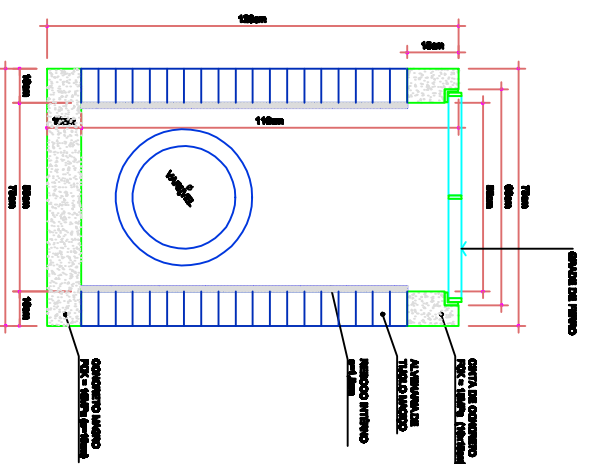


PLANTA 01
Escala 1/10

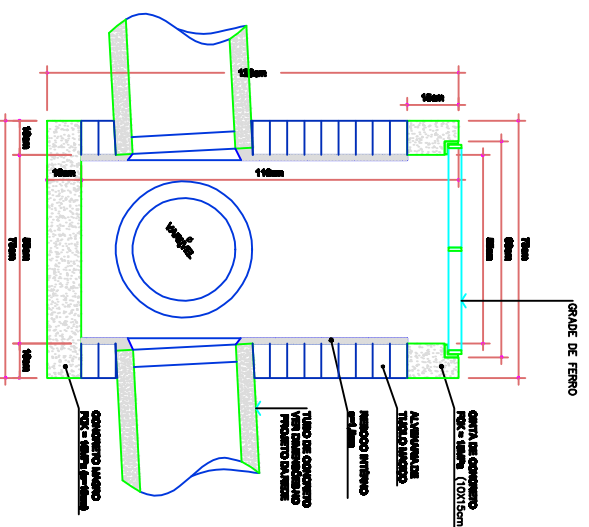
PLANTA 02
Escala 1/10

PLANTA 03
Escala 1/10

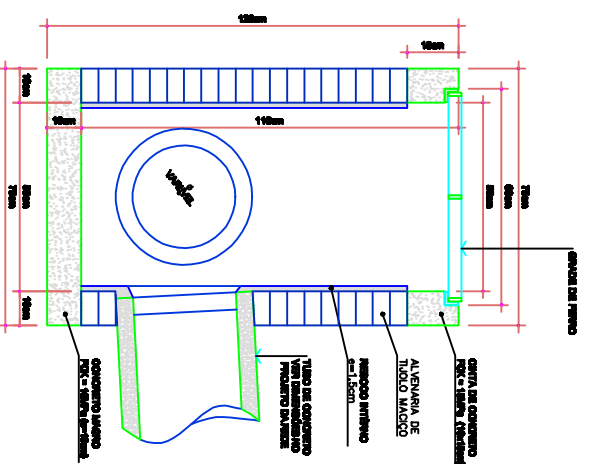
PLANTA 04
Escala 1/10



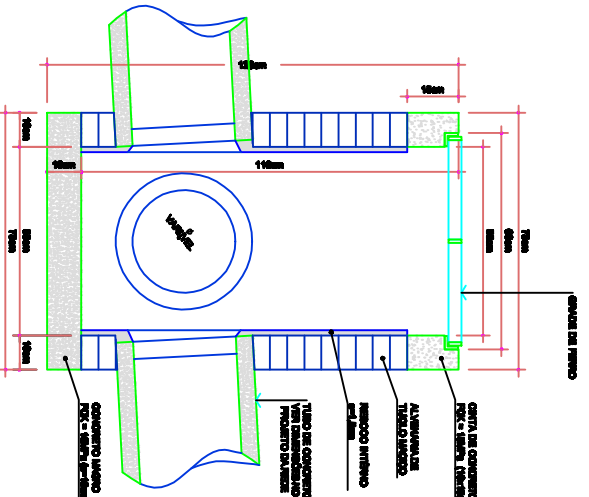
CORTE AA
Escala 1/10



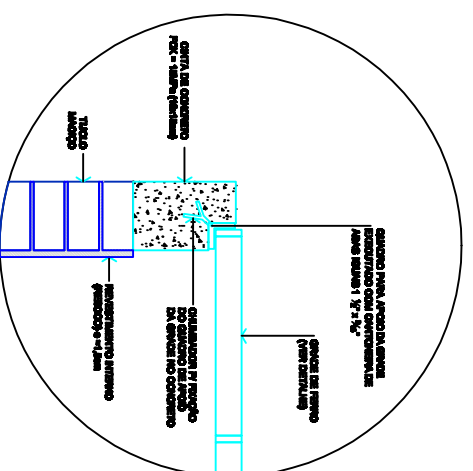
CORTE BB
Escala 1/10



CORTE CC
Escala 1/10



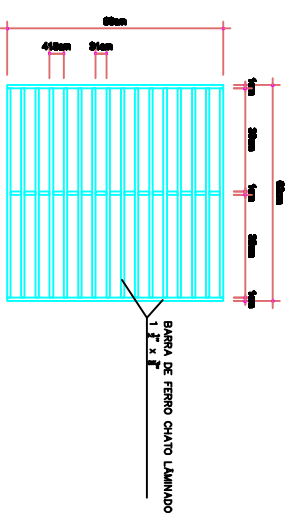
CORTE DD
Escala 1/10



DETALHE APOIO DA GRADE
Escala 1/5



CORTE



DETALHE DA GRADE
Escala 1/10

<p>MUNICÍPIO DE CATANDUVAS - SC</p> <p>PROJETO DE PAVIMENTAÇÃO EM PAVIMENTAÇÃO ASPHALTADA</p> <p>PROJETO DE PAVIMENTAÇÃO</p> <p>PARTE DA TRAV. ANJOZINHO/OLIVEIRA</p>		<p>ammoc</p> <p>DETALHAMENTO DAS BOCAS-DE-LOBO E GRADES</p> <p>UNIVERSIDADE ADOQUIL</p>	
<p>Projeto: DENIS MARCELO ZILIANI - ENGR. CIVIL - CREA/SC 60.605-4</p> <p>Projeto: MICHEL ALBERTI - ENGR. CIVIL - CREA/SC 60.605-4</p> <p>Projeto: ANA JULIA UNDESCHIT - ENGR. CIVIL - CREA/SC 60.605-4</p> <p>Projeto: LUIZ CARLOS DE MOURA - ENGR. CIVIL - CREA/SC 60.605-4</p>	<p>Projeto: DENIS MARCELO ZILIANI - ENGR. CIVIL - CREA/SC 60.605-4</p> <p>Projeto: MICHEL ALBERTI - ENGR. CIVIL - CREA/SC 60.605-4</p> <p>Projeto: ANA JULIA UNDESCHIT - ENGR. CIVIL - CREA/SC 60.605-4</p> <p>Projeto: LUIZ CARLOS DE MOURA - ENGR. CIVIL - CREA/SC 60.605-4</p>	<p>Projeto: DENIS MARCELO ZILIANI - ENGR. CIVIL - CREA/SC 60.605-4</p> <p>Projeto: MICHEL ALBERTI - ENGR. CIVIL - CREA/SC 60.605-4</p> <p>Projeto: ANA JULIA UNDESCHIT - ENGR. CIVIL - CREA/SC 60.605-4</p> <p>Projeto: LUIZ CARLOS DE MOURA - ENGR. CIVIL - CREA/SC 60.605-4</p>	<p>Projeto: DENIS MARCELO ZILIANI - ENGR. CIVIL - CREA/SC 60.605-4</p> <p>Projeto: MICHEL ALBERTI - ENGR. CIVIL - CREA/SC 60.605-4</p> <p>Projeto: ANA JULIA UNDESCHIT - ENGR. CIVIL - CREA/SC 60.605-4</p> <p>Projeto: LUIZ CARLOS DE MOURA - ENGR. CIVIL - CREA/SC 60.605-4</p>
<p>Projeto: DENIS MARCELO ZILIANI - ENGR. CIVIL - CREA/SC 60.605-4</p> <p>Projeto: MICHEL ALBERTI - ENGR. CIVIL - CREA/SC 60.605-4</p> <p>Projeto: ANA JULIA UNDESCHIT - ENGR. CIVIL - CREA/SC 60.605-4</p> <p>Projeto: LUIZ CARLOS DE MOURA - ENGR. CIVIL - CREA/SC 60.605-4</p>	<p>Projeto: DENIS MARCELO ZILIANI - ENGR. CIVIL - CREA/SC 60.605-4</p> <p>Projeto: MICHEL ALBERTI - ENGR. CIVIL - CREA/SC 60.605-4</p> <p>Projeto: ANA JULIA UNDESCHIT - ENGR. CIVIL - CREA/SC 60.605-4</p> <p>Projeto: LUIZ CARLOS DE MOURA - ENGR. CIVIL - CREA/SC 60.605-4</p>	<p>Projeto: DENIS MARCELO ZILIANI - ENGR. CIVIL - CREA/SC 60.605-4</p> <p>Projeto: MICHEL ALBERTI - ENGR. CIVIL - CREA/SC 60.605-4</p> <p>Projeto: ANA JULIA UNDESCHIT - ENGR. CIVIL - CREA/SC 60.605-4</p> <p>Projeto: LUIZ CARLOS DE MOURA - ENGR. CIVIL - CREA/SC 60.605-4</p>	<p>Projeto: DENIS MARCELO ZILIANI - ENGR. CIVIL - CREA/SC 60.605-4</p> <p>Projeto: MICHEL ALBERTI - ENGR. CIVIL - CREA/SC 60.605-4</p> <p>Projeto: ANA JULIA UNDESCHIT - ENGR. CIVIL - CREA/SC 60.605-4</p> <p>Projeto: LUIZ CARLOS DE MOURA - ENGR. CIVIL - CREA/SC 60.605-4</p>

DRE 02/02